



MONTHLY MEMBERSHIP PROGRESS REPORT

District 33 S

Results as of: 02/28/2018

GMT: MAHESH CHITNIS

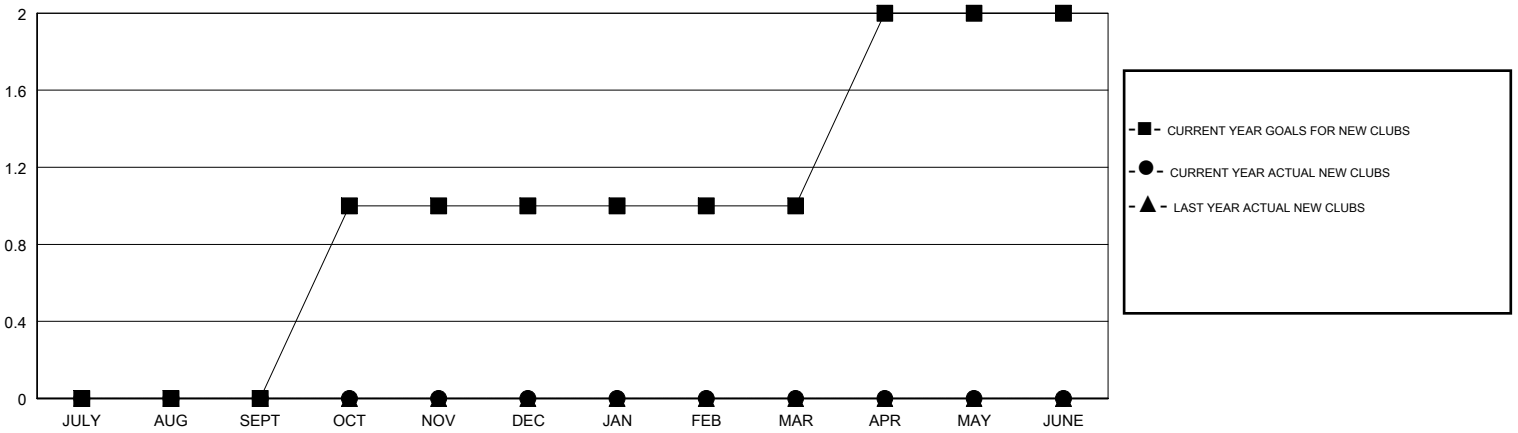
LOCATION MASSACHUSETTS

GMT CA

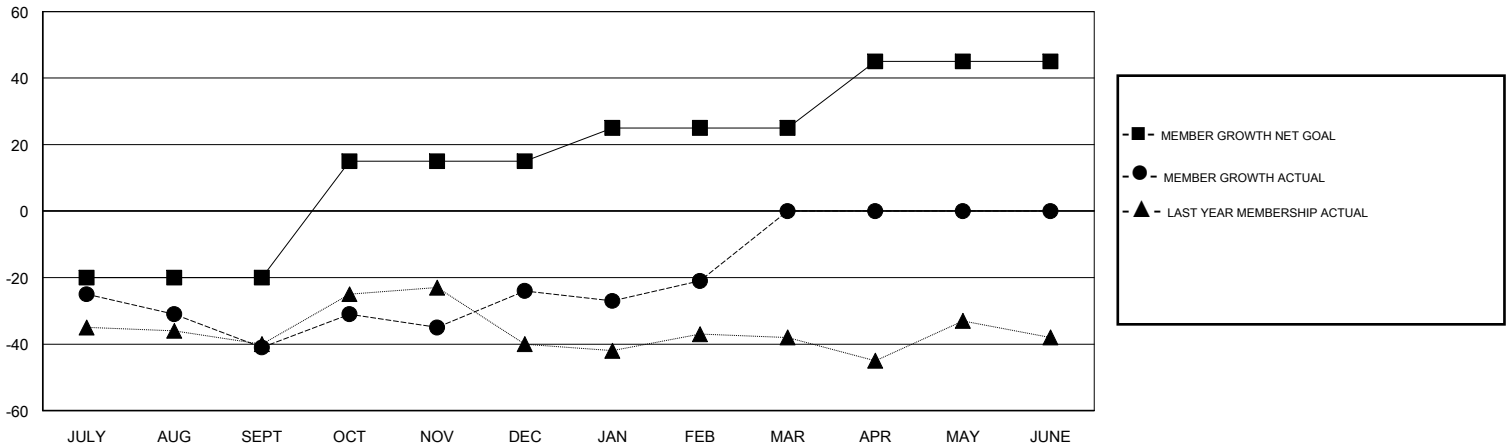
Clubs			
RESULTS FOR 2017-2018			
QUARTER	NEW CLUB GOAL	NEW CLUBS	DROPPED CLUBS
JULY/AUG/SEPT	0	0	0
OCT/NOV/DEC	1	0	0
JAN/FEB/MAR	0	0	0
APR/MAY/JUNE	1	0	0

Members			
RESULTS FOR 2017-2018			
QUARTER	MEMBER GROWTH NET GOAL	MEMBER GROWTH ACTUAL	DROPPED MEMBERS ACTUAL (including transfers)
JULY/AUG/SEPT	-20	14	53
OCT/NOV/DEC	35	61	38
JAN/FEB/MAR	10	26	20
APR/MAY/JUNE	20	0	0

GOALS AND ACTUAL NEW CLUBS CUMULATIVE



GOALS AND ACTUAL MEMBERS CUMULATIVE



DROPPED CLUBS: 0

25 CLUBS OF 47 ADDED 1 OR MORE NEW MEMBERS

GENDER DISTRIBUTION	
MALE	1,138 (66.51%)
FEMALE	573 (33.49%)
Women Percentage Fiscal Year Goal: 40%	

DROPPED MEMBERS	
DECEASED	13
CLUB CANCELLED	0
OTHER	98
TOTAL	111

[CLICK HERE FOR CUMULATIVE MEMBERSHIP DATA](#)

TOTAL FAMILY UNIT MEMBERS	216
FAMILY MEMBERS PAYING HALF DUES	111